

TIMBABUILD®

Super Tough Epoxy Wood Repair System

EHB4 Professional

Product Description

Timbabuild® EHB4 Professional manufactured by Chemfix, is a two-part thixotropic 1:1 ratio mix solvent free, epoxy based wood filler. It is specially designed for large and extensive repairs to areas of damaged and rot affected timber in both horizontal and vertical applications. It will also directly treat the timber to prevent any further occurrences of decay. EHB4 Professional displays high strength and impact resistance, and is cured and ready to paint within a 4 hour period (at 20-45°C).

EHB4 Professional is supplied in a specially designed side-by-side cartridge that fits into a custom made extrusion tool, accurately dispensing the material. Once cured, EHB4 Professional can be machined, drilled and accepts nails, screws etc. EHB4 Professional is coatable with most decorative wood finishes.

The special 'non-slump' formula allows it to seamlessly replace large sections of wood in applications such as windows, doors, beams, gutters, soffits and fascia's. This product has a minimum 24 month shelf life.

Key Features

- Solvent Free - suitable for indoors and outdoors.
- Thixotropic - Ideal for Vertical & Horizontal applications.
- Cartridge System Ensures Accurate Mixing.
- High Strength & Durability.
- Fast and Simple to Use, Easy to Clean and Store.
- Used with the EWS primer system.
- Cured and ready for painting within four hours (at 20-45°C).
- Suitable for Splicing Repairs and as an adhesive. (Lamination)
- Used in Renovation contracts to restore listed buildings.
- Epoxy formulation does not shrink and gives an excellent bond.



Available Sizes

400ml 1:1 Nylon Cartridge
+ Specialist Extrusion Tool
Packed 20 x 400ml per carton outer

Conforms to
ISO 9001 & 14001

4 Hour Cure

Thixotropic

Typical Hardening Time*

BASE MATERIAL TEMPERATURE (°C)	45	35	20	15	5
TYPICAL GEL TIME (mins)	6	10	22	65	110
TYPICAL CURE TIME (mins)	180	180	240	720	1440

*This is the typical gel time for 100g of mixed product & cure time for a 90ml mass. Cure time also based on 100g of product, to reach 50 on shore D hardness.

Typical Performance Data

EHB4 Professional	Drillable	Sandable	Outdoors	Indoors	Weathered	Knotted	Stainable	Mix Ratio	Solids Content	Volume	Primer System	Application Temp.
	•	•	•	•	•	•	•	1:1	100%	400cm ³	EWS	5 - 45°C

Typical Physical Property

EHB4 Professional	STORAGE / SHELF LIFE	IMPORTANT
APPEARANCE - CREAM MIXED DENSITY g/cm ³ - 1.10 Available for download at www.timbabuild.co.uk	This product should be stored between +5°C & +35°C. The Shelf life of the product is 24 months from the manufacture date.	The information and data given is based on our own experience, research and testing and is believed to be reliable and accurate. However, as Chemfix Products cannot know the varied uses to which its products may be applied, or the methods of application used, no warranty as to the fitness or suitability of its products is given or implied. It is the users responsibility to determine suitability of use. For further information please contact our Technical Department.

Wood may absorb a stain differently to the filler. We would always advise use of a test panel when working with stains and varnishes.

Chemfix Products Ltd • Mill Street East • Dewsbury • West Yorkshire • WF12 9BQ • UK

Tel : 01924 453886 • Fax : 01924 431658 • Web : www.chemfix.co.uk

TIMBABUILD®

Super Tough Epoxy Wood Repair System

EHB4 Professional

Preparation & Mixing

Prior to application, all surfaces should be clean and sound. See preparation information on Timbabuild® EWS. data sheet prior to application of Timbabuild Wood Repair Systems.

- 1) Mount the cartridge into the extrusion tool and squeeze out the required volume of material onto a suitable mixing board.
- 2) Mix with a spatula or knife until a smooth, even coloured, streak-free mix is obtained.
- 3) Ensure that the filler is scraped clear of the board and spatula at least once during mixing. This ensures that both base and activator are thoroughly mixed together and no unmixed material will be used.

Application

- 1) Spread a small amount of EHB4 Professional using a spatula, knife or similar tool onto the exposed timber to ensure that no air is trapped.
- 2) The EHB4 Professional can then be moulded into the hole leaving it slightly proud with a smooth and even surface.
- 3) Alternatively, a clean, smooth flexible piece of plastic can be placed over the EHB4 Professional to act as a shuttering. Once the EHB4 Professional has cured the plastic can be removed leaving a smooth level surface.

Refer to the Timbabuild® Repair Guide for further information.



EWS Primer System



Epoxy Wood Stabiliser 225ml 1:1 ratio
Packed 6 x 225ml per carton outer.

EWS primer system is a specially designed two-part low viscosity, solvent free, resin solution which is designed to strengthen weakened wood fibres by penetrating deep into the wood. The product is used as a primer in conjunction with the Timbabuild Wood Repair systems.

Once the damaged, decayed and discoloured wood has been removed by use of a suitable cutter tool such as a router or chisel, then the area to be treated is lightly sanded to ensure excellent adhesion. The moisture content of the wood should be no greater than 18% (check using a standard moisture meter) and damp wood should be allowed to dry naturally, or by way of a hot air gun. The two components are mixed manually into a separate container, and thoroughly agitated for one minute. The 2:1 mixing ratio should be strictly observed. EWS should be applied directly onto bare wood in the repair area using a standard brush and then left to cure for 30 minutes, prior to carrying out the repair. Please refer directly to the Timbabuild® EWS data sheet for more details.

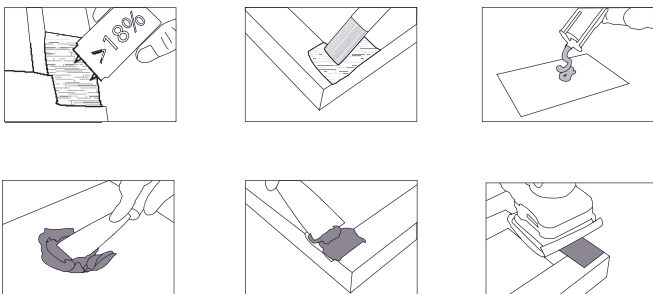


400ml Extrusion Tool

Health & Safety

Timbabuild® EHB4 Professional Base component is classified as an irritant and the activator is classified as corrosive. Ensure protective clothing is worn during use. If material comes into contact with the skin wash off with plenty of soap and water. If irritation persists or a rash appears seek medical advice.

For further information refer to the Material Safety Data Sheet.



Chemfix Products Ltd • Mill Street East • Dewsbury • West Yorkshire • WF12 9BQ • UK

Tel : 01924 453886 • Fax : 01924 431658 • Web : www.chemfix.co.uk